

V-TUF[®]

V-TUF[®]

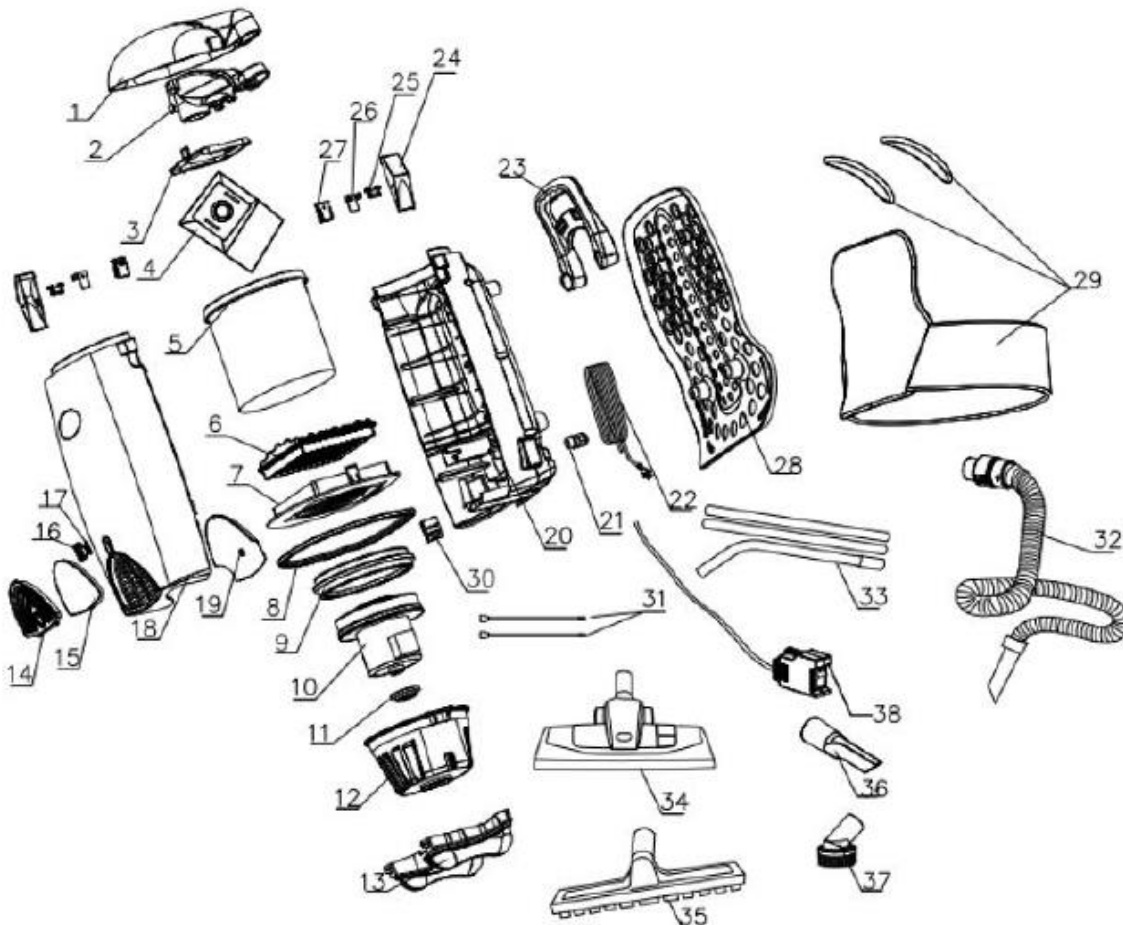


RUCKVAC 240,110

OPERATOR MANUAL



Please read this manual before using the RUCKVAC Vacuum cleaner
Errors And Omission Excused. Specification May Change Without Notice. Please Refer To www.v-tuf.com For
The Latest Version.



PT No.		Pos
WND/1	3 PIECE WAND SET. ELBOW + 2 EXTENSIONS	38
VLX15	CREVICE TOOL	41
VTM512-32	HOSE	37
VLX10	ROUND BRUSH	42
VTM103	POWER TOOL ADAPTOR	
VLX7	CARPET FLOOR HEAD	39
VTM505	HARD FLOOR HEAD	40
VTM501	DUST COLLECTION BAGS (PACK OF 10)	4
VTM502	HEPA ESSENTIAL FILTER	6
VTM503	BASKET FILTER	5
VTM523	EXHAUST FILTER	15

INTRODUCTION

Thank you for purchasing this V-TUF product.

V-TUF is focused on research and development to make sure you are fully satisfied with our products. Please read this manual carefully and follow the instructions to ensure you get the best performance from this machine.

GENERAL INFORMATION

1. Before use operators must be provided with information, instruction and training for the use of the machine and the substances for which it is to be used, including the method of operation, cleaning and maintenance and disposal of the material being collected.
2. This manual has been included as an integral part of the appliance and should be carefully read through **BEFORE** using the machine.
3. Take the appliance out of its packaging and make sure it is in perfect condition, including accessories and any optional extras you have purchased from the V-TUF range.
4. Make sure that the electrical data of the appliance, shown on the label, corresponds to those of the mains supply. (For Battery powered products ensure that the charger is plugged into the correct mains supply).
5. The appliance must only be used with V-TUF accessories and spare parts.
6. The manufacturer disclaims all liability for injury to persons and animals and damage to things due to the irresponsible use of the appliance and to the use of non-original accessories and spare parts.
7. The repair and/or replacement of the various component parts, especially electrical parts, must be done by competent, trained personnel authorised by V-TUF.

INSTALLATION

1. Check the full filtration system is in place correctly and the clips that fasten the head to the tank are in the clamped position and that the head is seated all-round the perimeter and secure.
2. Fit the hose to the vacuum connector; fit the required accessory to the end of the hose.
3. Connect the power cable of the appliance to the power socket with switches on "0" (OFF POSITION). (FOR Battery powered products, fit the battery with the switch off).

OPERATION INSTRUCTIONS

1. Ensure that there is sufficient ventilation for the machine and the operator
2. Always keep the machine upright.
3. Ensure that the vacuum cleaner is correctly fitted to the back of the operator and that all the straps are done up. 2 straps over the shoulder and connected with the horizontal strap. The waist belt done up comfortably.
4. The operator should not use the vacuum cleaner if they have a weak back or back pain.
5. Switch the machine on, use according to the guidelines and turn machine off, empty and clean after operation.

IMPORTANT

1. Never use this machine in wet conditions.
2. Do not use your machine if it is not functioning correctly. Regularly inspect electrical leads and connections, filters and listen for unusual noises. If in doubt, contact your nearest service centre for advice.

MAINTENANCE

1. Ensure all maintenance is carried out in a suitable, controlled environment.
2. The filter elements can be cleaned by vacuuming them with a suitable unit that has the full filtration system in place.
3. Replace the vacuum filter if it is damaged in any way.
4. Damaged filters could allow the dust / materials to penetrate the filter area and become the cause of serious damage to the user and surrounding people, and the appliance.
5. Check and free the blocked parts (vacuum pipes, connector, brushes, etc.) from any deposited materials.

6. Items that cannot be cleaned satisfactorily need to be disposed of in an impervious plastic bag in accordance with current, local regulations. Replace the items with genuine parts.
7. If necessary, clean the tank. Never leave dust in the tank for long periods of time

IMPORTANT INFORMATION

Never use the machine if you are unsure or become uncertain due to any faults of any kind, including those not mentioned in this manual. Ensure that the machine has an up to date electrical and functional safety test and that nothing has been moved or replaced since the test was carried out.

Technical Information






Model	RUCKVAC-ION
Capacity	5 Litres
Working Voltage	110/240 Volts
Motor Power	1400 Watts
Function	Dry Only Vacuuming
Width x Depth	320mm x 255mm
Height	480mm
Accessories	Ø32mm Accessories Kit

Safety Instructions

These instructions are for the user's safety. All users of the V-TUF cleaning equipment should ensure to have read this literature before using the machine.

- This machine shall be used only by trained, competent and experienced operators. Operators should observe any safety regulations appropriate to the materials being handled.
- Do not use in the presence of flammable gasses.
- This machine should be kept out of the reach of children and pets at all times.
- Do not clean up any hot material, e.g. ash.
- Always turn off the machine, and then unplug it (for battery units, remove the battery) before you service the machine. Do NOT use this machine without the filters, as this is a health hazard and will damage and contaminate the internals of the vacuum cleaner.
- All repairs on V-TUF products should be done by an authorised service representative.
- If the machine shuts down, be sure to turn off the machine and unplug (for battery units, remove the battery) it before troubleshooting.
- For safety, the machine contains an electronic overload protection.
- Always turn off and unplug/remove battery when the machine when it is not in use.
- If any part of the appliance becomes damaged or fractured, it must be replaced with genuine V-TUF replacement parts only.

Caution: what to do

1. All power conduction parts must be protected against water. SHORT-CIRCUIT RISK.  
2. All services or maintenance performed on the appliance must always be done with the plug disconnected from the power supply or battery is disconnected.  
3. When changing the essential filter, ensure that the surfaces are dust free to prevent dust being transferred to the downstream location of the essential filter.
4. Ensure that filters are correctly fitted with a 100% seal around the seat.
5. Only ever use the appliance for the purposes for which it has been designed and manufactured. ACCIDENT RISK. 
6. If vacuum exhaust starts emitting material, turn off immediately and ensure all correct filtration is present. If any substance has penetrated beyond the essential filter, ensure that the vacuum is decontaminated and has the correct filtration fitted prior to use.
7. Keep Filters Clean
8. Use genuine V-TUF Filter Bags
9. Keep the machine clean
10. Only use the accessories provided with the machine
11. Never reuse the dust bag.
12. Replace worn or damaged parts immediately.
13. Keep hoses and airways clear.
14. Inspect the power cable regularly. If damaged in any way, get a qualified person to replace it with a genuine part
15. Ensure that the machine has an up to date electrical and functional safety test and that nothing has been moved or replaced since the test was carried out.



Caution: what not to do

1. Do not leave the machine running and unguarded nor within reach of children, animals or persons that are not responsible for their own actions.

ACCIDENT RISK. 

2. Do not vacuum inflammable combustion substance (e.g.: hot ashes), explosive and toxic substances, electrostatic or substances that are dangerous for health. EXPLOSION OR

POISONING HAZARD   

3. Do not rest the vacuum inlet on or move this close to delicate parts of the body (eyes, ears, mouth, etc.). ACCIDENT RISK.  

4. Do not touch the plug and/or socket with wet hands. ELECTRIC SHOCK RISK.    

5. Do not soak the appliance or spray it with liquid substances. SHORT-CIRCUIT.

6. Do not pull or lift the appliance using the power cable. SHORT-CIRCUIT RISK.  

7. Do not leave the device plugged into the mains power supply when not in use.

8. Do not suck up hot ashes or debris

9. Do not immerse in water or rinse off with hose. Do not expose to precipitation.

10. Do not add air fresheners or any foreign objects upstream/behind the filtration systems.

SAFETY INDICATIONS

Operator safety

This manual is to be considered as an integral part of the general user manual and provides the necessary instructions vacuum cleaners.

Therefore, the supplied general instruction booklet must be read before operation.

In addition to the user instructions and the current regulations in the country of use, the sector's recognised technical regulations for the safe and appropriate use of this equipment must also be followed.

Transport and handling

Be sure to close all the dirt container's locking hooks before transport. Do not turn the device upside down. Ensure that the vacuum cleaner and accessories are transported in the appropriate manner relating to the type of material being handled.

Ensure that all dusts are contained and not transmitted to beyond the controlled area.

Possible uses for the vacuum cleaner

The vacuum appliances to which these user instructions refer are suitable for professional use for non-hazardous dry material .

The collection of the following materials is forbidden:

- Incandescent materials.
- Hazardous liquids.
- Flammable and explosive dusts (for example, magnesium dusts, aluminium dusts, etc.).

The use of this device must be performed in rooms or environments which are sufficiently ventilated whenever the device's exhaust returns into the environment itself. The user must respect the current national regulations in the country in which the device is being employed. The operator must be read and understood this operator's manual before beginning any work activities, taking note of the safe usage regulations. The user must also receive instruction regarding the dangers deriving from the aspirated materials and the methods for their safe disposal.

Maintenance, cleaning and repair

Care and attention must be exercised at all times during use. Routine and preventative maintenance is carried out periodically to ensure safe operation.

Failure to carry out maintenance as necessary, include the replacement of parts to the correct standard could render the equipment unsafe and the manufacturer can accept no responsibility in this respect.

Before performing any cleaning or maintenance operations on the device, make sure that it is disconnected from the mains power supply by removing the plug from the socket (For battery units, disconnect / remove the battery).

Treat the device in a responsible manner to avoid creating situations which could be dangerous to both yourself, as well as to others.

The user must wear any appropriate safety PPE during such operations, especially respiratory protection. The environment in which maintenance activities are to be performed must be controlled in order to prevent the dispersion of material into the surroundings.

For user servicing, the machine must be dismantled, cleaned and serviced, as far as is reasonably practicable, without causing risk to the maintenance staff and others. Suitable precautions include decontamination before dismantling, provision for local filtered exhaust

ventilation where the machine is dismantled, cleaning of the maintenance area and suitable personal protection.

DESCRIPTIVE INFORMATION Detailed use of the machine

ATTENTION The vacuum cleaner is suitable for extracting dry non-flammable dusts,

BEFORE FIRST USE

Vacuum assembly and testing

Before using the device, check that:

No foreign elements are present within the container.

Ensure that the head is fastened down with the head clips to form an air-tight seal.

The relevant filters and bag have been installed. The bag is fitted with a membrane seal which must be fitted over the internal slot of the tank intake. It also has a complete orifice seal tag which must be applied once the used bag is removed from the tank intake for safe disposal. This is important to ensure that the contained dust does not escape. The hose is correctly connected to the tank. The machine is connected to the correct electrical supply.

Initial working phase check

Before beginning to vacuum dusts check that the full filtration system is in place and within the device and that they are positioned correctly.

USE OF THE DEVICE

ATTENTION Never use on hazardous, flammable or explosive dusts/substances.

A filter bag must always be fitted. Never reuse a filter bag.

FILTER BAG REFERENCE TABLE:

CODE	DESCRIPTION	VACUUM MODEL
VTM502	V-TUF Essential Filter	RUCKVAC
VTM501	Polyester Filter Bag	RUCKVAC
VTM503	Filter Basket	RUCKVAC



ATTENTION

The dust collection bag must not be filled past $\frac{3}{4}$ of their capacities. Check periodically during use. Do not vacuum liquids or particularly humid substances.

END OF WORK ACTIVITIES

Disconnect the device's power supply by removing its electrical plug from the outlet.

Replace the bag, empty and wipe the waste container and dispose of the material according to the relevant regulations appropriate to the materials being handled.

Ensure the container is clean and fit a fresh dust collection bag.

Store the vacuum in a safe place where it cannot be accessed by animals, children or unauthorised personnel.

Replacing the filter bag:

Never run the vacuum cleaner without the full filtration system, in place. Never reuse the bags

Remove the head.

Gently unclip the bag retainer. Remove the filter bag, immediately close bag inlet tab. Dispose of in the correct manner according to the type of waste ensuring there is no potential leakage of the dust that would expose person to inhaling the material.

Ensure that the tank is empty and clean.

Fit the new filter bag, making sure that the bag's membrane seal fits perfectly over the internal slot of the tank inlet and that the bag fits neatly around the edge of the tank internal. Refit the head ensuring that the seal and basket filter are correctly in place. Make sure that the clips are completely closed and there full, airtight seal around the rim of the tank.

MAINTENANCE

All parts should be disposed of in the appropriate manner. Ensure that the machine is disconnected from the power supply. Maintenance must be carried out by a competent, trained, authorised personnel donning the appropriate PPE and within the appropriate zone.

Check the supply cables and seals for damage. If damaged, replace before further use.

Ensure that the machine is decontaminated in a specified environment prior to maintenance work being carried out.

Replacing the essential filter element

Gently remove the head of the vacuum cleaner. Remove the basket filter.

Ensure that the container is dust free. This is important to ensure that no dust transferred to the downstream position of the essential filter.

Unclip the essential filter and replace with a genuine V-TUF spare part. Make sure that the filter is fitted correctly ensuring a full seal around the seat.

Dispose of in compliance with current local laws.



Never use the vacuum cleaner without the full filtration system in place.

TROUBLESHOOTING

PROBLEM	PROBABLE CAUSE	PROBABLE SOLUTION
The machine does not start	No current.	Make sure that the machine is plugged into the correct power source and that there is sufficient current.
The machine suddenly stops	Overheating or no current.	Allow the machine to cool down, try and operate again.
Reduced suction power.	Filter, nozzle, hose or tube clogged; bag full.	Check, unblock, Clean and replace as required.
Suction power suddenly drops	Tank full.	Stop the machine and empty the tank.

V-TUF[®]

www.V-TUF.COM