

15. **MB6** 3/8M x3/8M BSP MALE x MALE NIPPLE

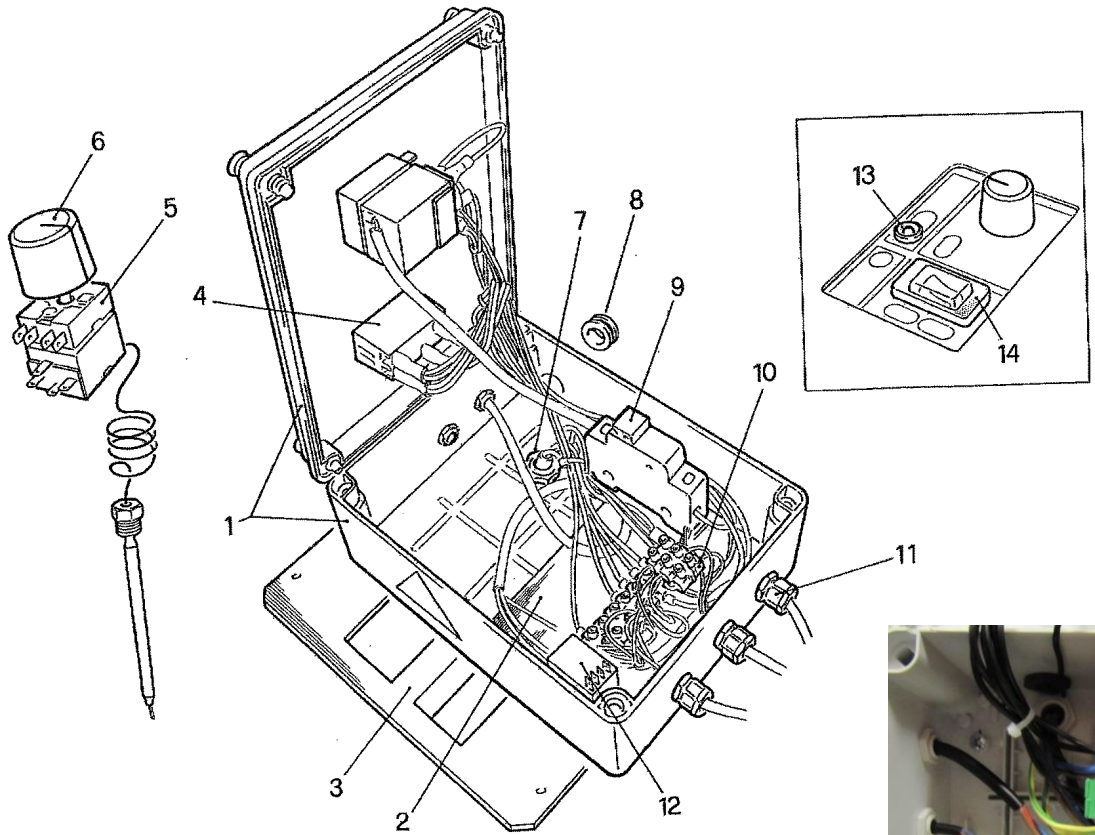
15A. **E/MB6/FB6** 3/8F x 3/8M BSP COMPACT 90o ELBOW

16. **W6** DOWTY 3/8" BONDED SEALS

18. (See insert photo) **CO.0611** BANJO UNLOADER VT 3/8-1/2 VTPS (Note: this should normally be sold with Items 15, 15A, 16, 48)

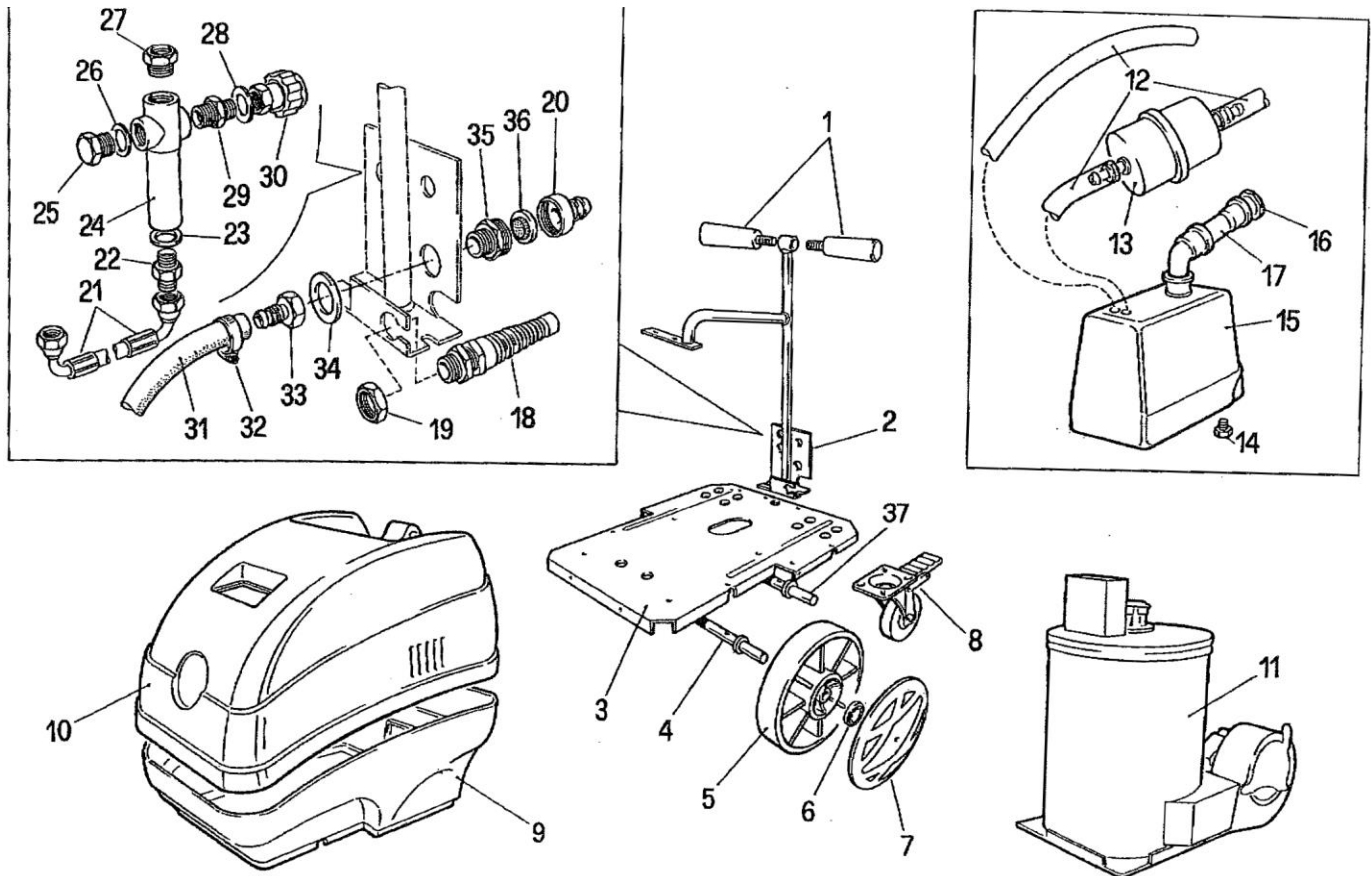
28. **CO.040M14** 40 BAR PRESSURE SWITCH

48. **MB8** 1/2M x 1/2M BSP MALE x MALE NIPPLE



Electric Control Parts

- 4. **12.016L** On-off Switch
- 5. **19.5111** Thermostat with switch
- 9A. **114.002** Sealed Electric control box
- 14. **12.2101** Switch cover and frame



Main body parts:

10. **XHD004** Main Cover

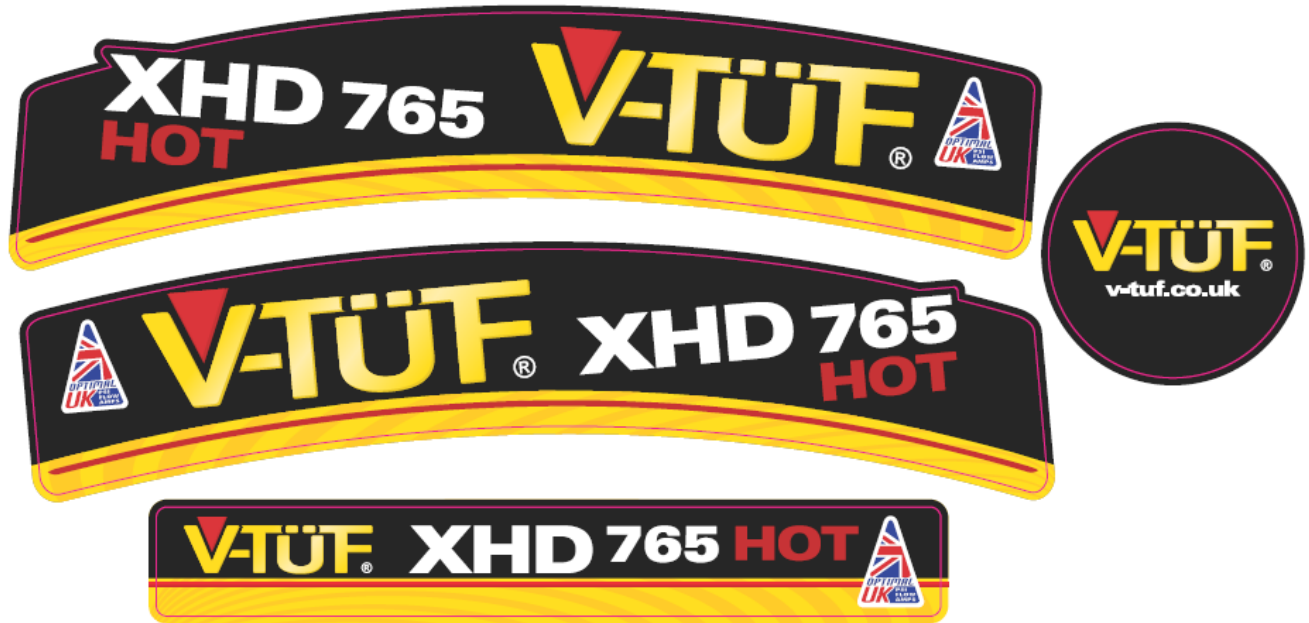
12 to 17 **XHD002** Fuel tank kit

13. **E3.601** Fuel Filter

16. **XHD006** Fuel cap for 765



# XHD 765 SPARE PARTS



SVTUFXHD765H V-TUF XHD765 HOT STICKER SET