

V-TUF[®]



VTX-10L PRESSURE SPRAYERS OPERATOR MANUAL



Please read this manual before using the VTX-10L

**CE DECLARATION OF CONFORMITY**

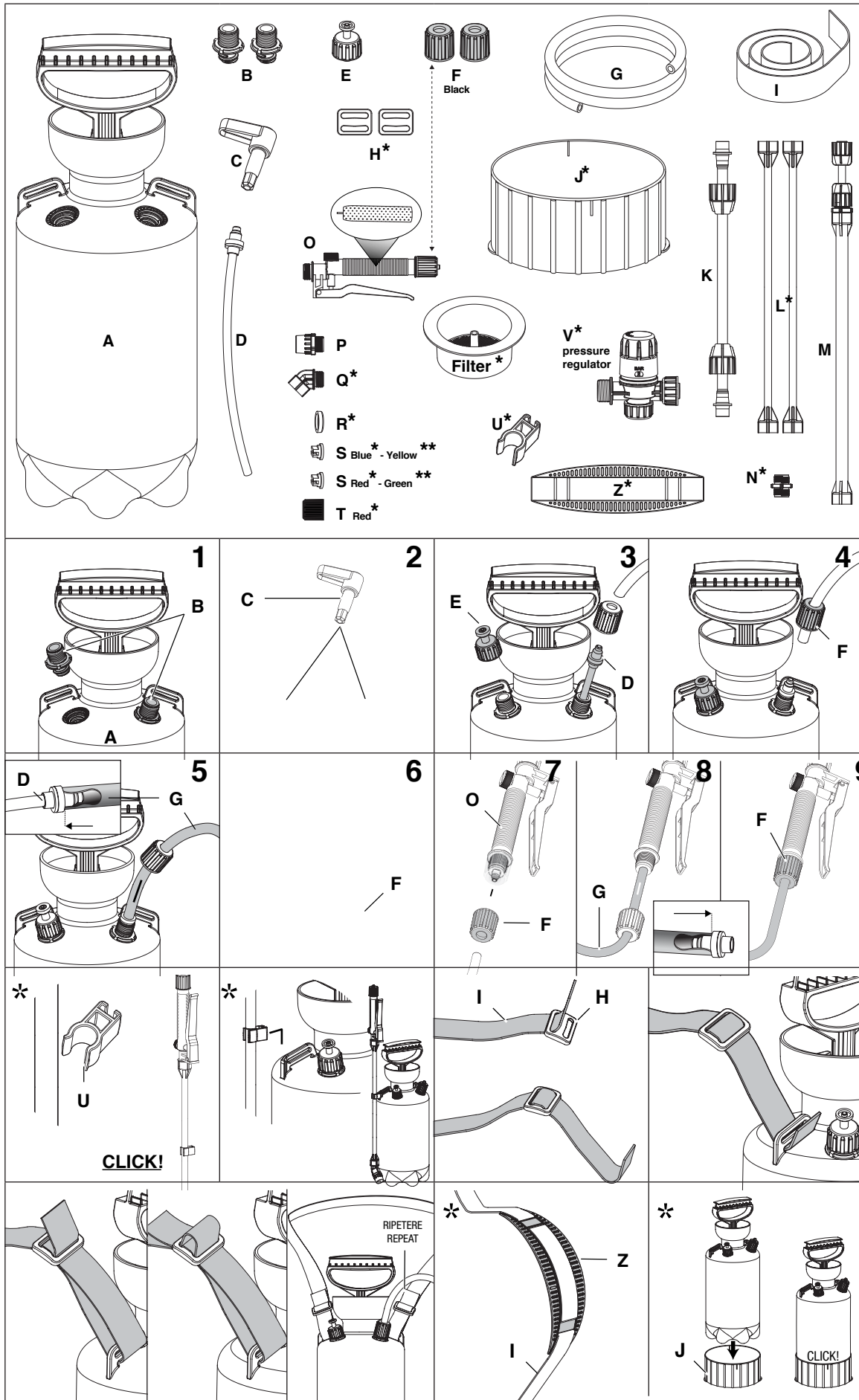
In accordance with:

- European Machinery Directive 2006/42/EC annex II.A and other applicable Directives the society, as manufacturer, confirm that the machinery PRESSURE SPRAYER comply with the Machinery Directive 2006/42/CE Art. 1, § 1 and Art. 2, § a) 1st section.

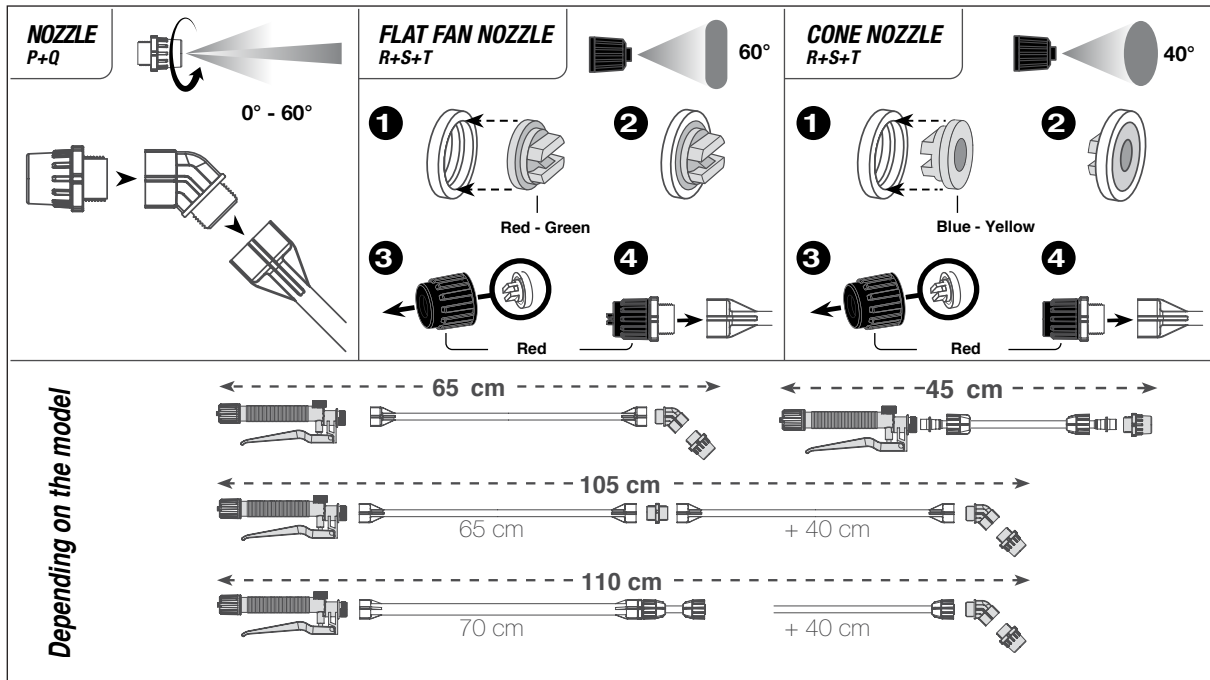
We herewith confirm that those parts exposed to pressure comply with the directive 2014/68/UE Art. 4, § 3.

We furthermore declare that the Technical Director is in charge of the technical file .




ASSEMBLY



ASSEMBLY



flow rate liters/minute (+/- 15%)								
fixed nozzles	plate		cone plate					
Pressure (bar)	Red 60°	Green 95°	Yellow (Ø 0,8) 30°	Blue (Ø 1,2) 40°				
1	0,915	1,275	0,325	0,565				
2	1,280	1,795	0,445	0,785				
3	1,515	2,120	0,540	0,990				
adjustable nozzles	resin (Ø 1,0)		brass (Ø 1,3)		maxi brass (Ø 1,3)		3-way resin (Ø 1,0)	
Pressure (bar)	cone 60°	cone 0°	cone 60°	cone 0°	cone 80°	cone 0°	cone 60°	cone 0°
1	0,375	0,495	0,285	0,965	0,330	1,050	0,620	1,330
2	0,510	0,670	0,385	1,340	0,445	1,470	0,830	1,780
3	0,625	0,795	0,535	1,600	0,540	1,805	1,000	2,330

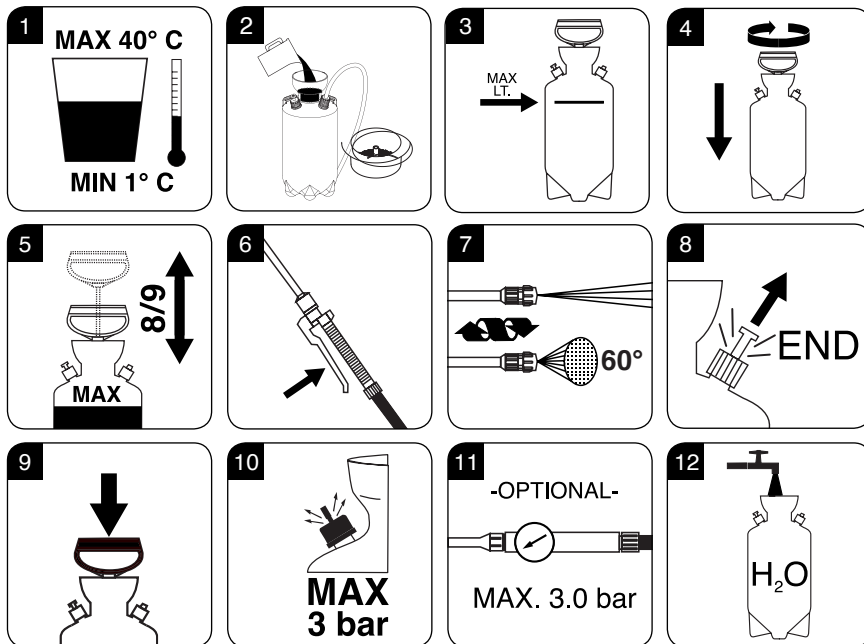
For the product typology details, please refer to the CE rating label on the tank YEAR: TYPE: DESCRIPTION: SERIAL: EMPTY MASS: NOMINAL VOLUME LT:	unladen weight	Liters		residual	Mesh classification of the different filters supplied to the pumps		
		maximum capacity	net capacity		* 	filter	Mesh
							
		5,80	3,00	≤0,25			
		7,95	6,00	≤0,25		plastic filter Ø 70x30	8 (1,2x1,8)
		10,75	8,50	≤0,25			
		15,00	12,00	≤0,25		plastic filter Ø 15x80	13 (1x1)

INSTRUCTIONS/MAINTENANCE

GASKETS

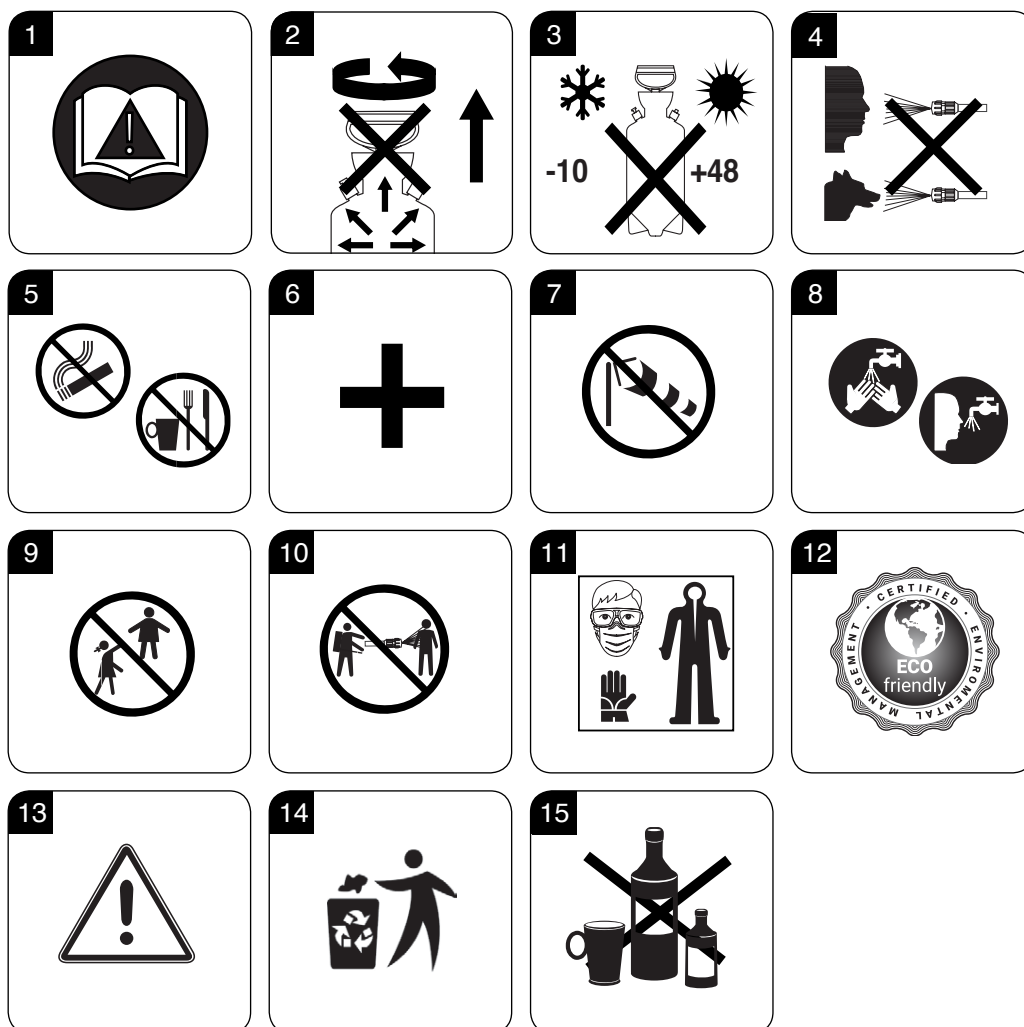
SPECIAL FOR CHEMICALS

	EPDM	FPM (VITON®)
CLEANING	DETERGENTS, DESCALERS, ACID ORGANIC & INORGANIC, BLEACHING AGENTS	FUEL, ACIDS
DISINFECTION	ALCOHOLS, DISINFECTANTS	INSTRUCTIONS/MAINTENANCE
BUILDING		SCALE REMOVERS, WATERPROOFING, IMPREGNATING AGENTS, ANTI-MOULD
LUBRICATION	HYDRAULIC FLUIDS	OILS, LUBRICANTS



1. Temperature of liquid
2. Mix chemical product in a separate container and pour in through the filter (filter mesh 8 - 1.2x1.8 mm).
3. Do not exceed the useful level indicated
4. Tighten the pumping unit on bottle
5. To create pressure in the sprayer, operate the pump lever until feeling some resistance.
6. Spray by pressing the lever of the lance (filter with \varnothing 1 mm).
7. Adjust the spray by turning the front ring nut of lance.
8. After using the sprayer release the pressure by pulling the safety valve bar.
9. Use the handle to keep the sprayer upright during transportation.
10. Unless differently indicated on the sprayer.
11. Check the pressure on the manometer.*
12. After use, rinse the container than operate the pump with clean water to completely empty the container and piston.
 - At least once a year clean pump thoroughly, re-grease or lubricate all moving parts and replace damaged gaskets, using original parts

IMPORTANT INFORMATION



1. Some pictograms in the (instruction booklet) may be not included on the sprayer. The user must always ask the dealer for the safety card of the chemical product to be used, also for disposal of the residual liquid. The use of substances not complying with current regulations is at user's own risk
2. Never open the pump when under pressure.
3. Do not leave the sprayer exposed to heat sources or intense cold
4. Do not spray toxic or harmful liquids on persons, animals or foodstuffs
5. Do not eat, drink or smoke during use
6. Must not be used if tiredness, illness or alteration occur.
7. Do not spray on windy days
8. Wash hands and face after use.
9. Do not leave the pump within the reach of children.
10. During use make sure no one is near the sprayer.
11. Use suitable protection equipment during use.
12. In order to respect the environment, usage of chemicals must be restricted to the minimum necessary.
13. Incorrect use or tampering relieves the manufacturer of any liability
14. At end-of-life, dispose of product components separately and compliant with current regulations. Refer to disposal symbols on each component.
15. Do not use for spraying food products (wine, milk, etc.).

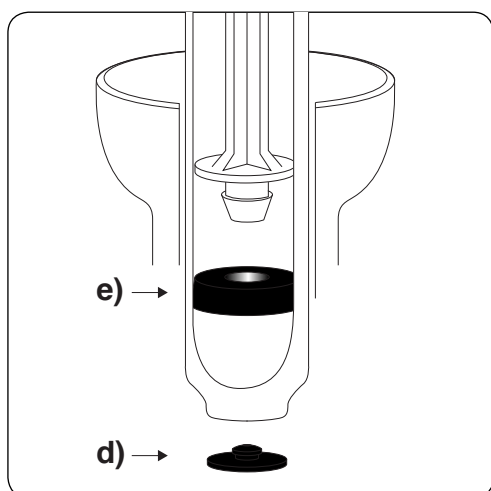
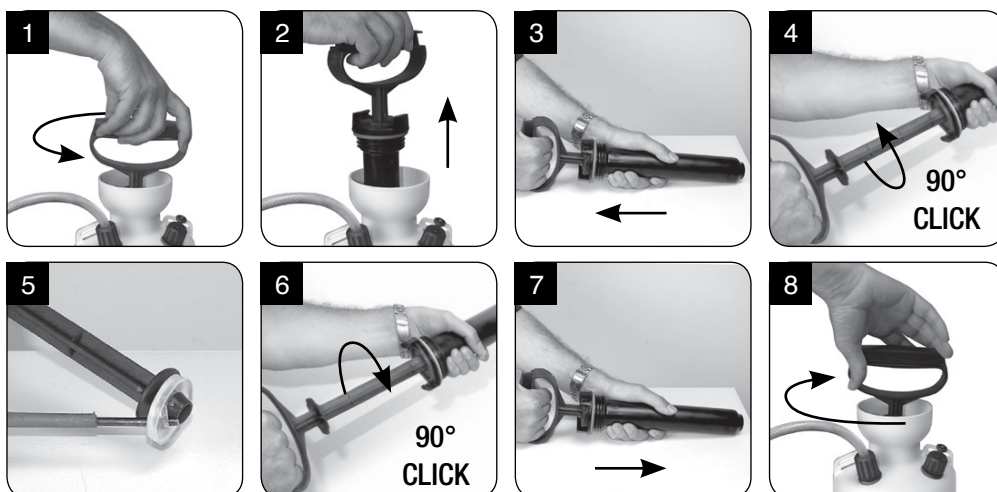
TROUBLESHOOTING

The pump is under pressure but the liquid does not come out.

- A) Make sure the flow regulator (OPTIONAL) is open.
- B) Check if the filter or lance nozzle are clogged. If so, disassemble the movable parts and remove any deposits with a jet of water or air.

The pump fails to pressurize:

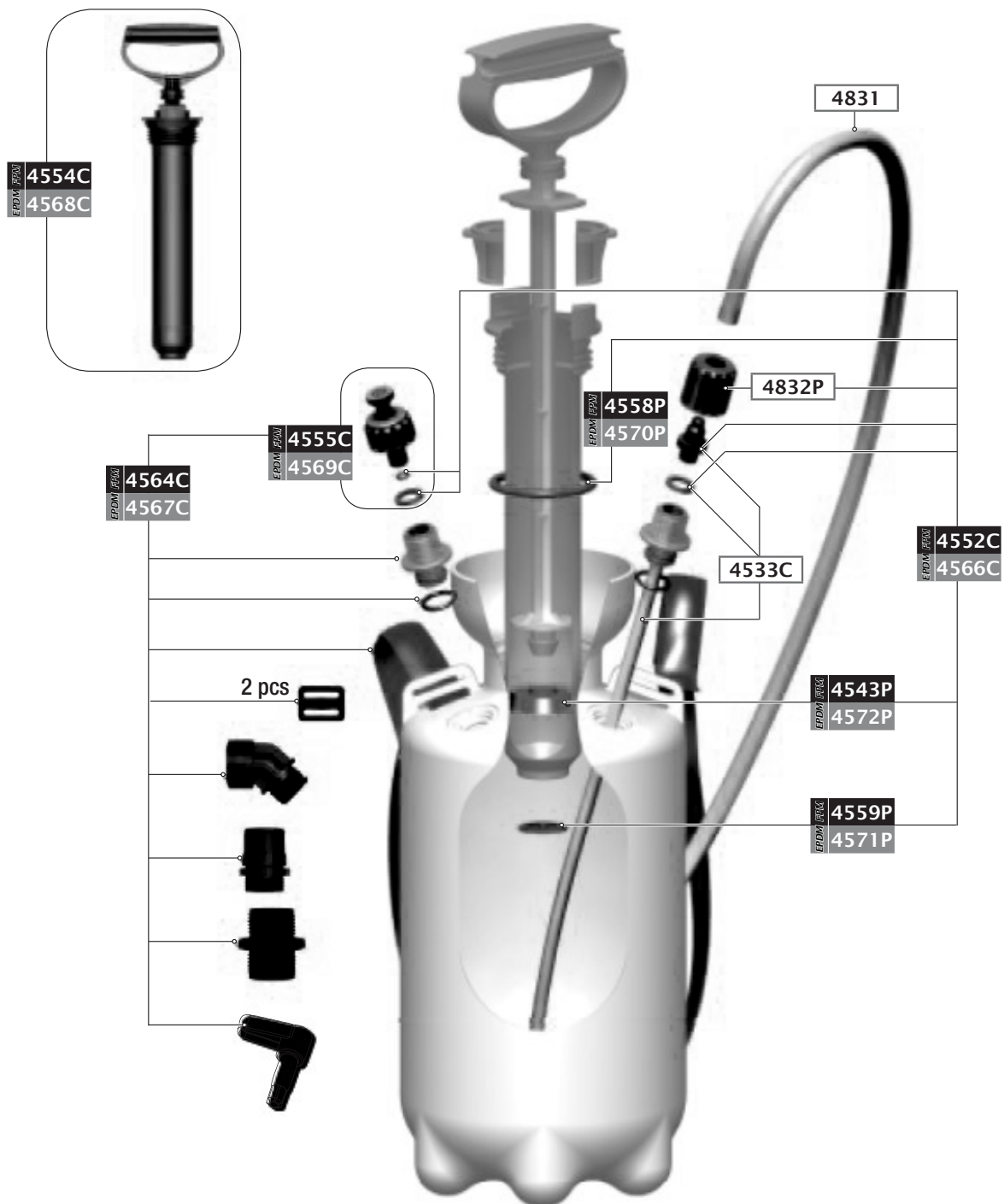
- a) There is little liquid in the container. Operate the pumping element many times until feeling a certain resistance.
- b) Make sure all the fixing ring nuts are tight .
- c) Make sure the pumping element is correctly tightened to the container.d) Check the goods state of seal on the bottom end of the pumping element. Other-wise replace it (4535P).
- e) If the pumping element fails to offer any resistance, replace the cap (4534P).
- f) If the pumping element is broken, fully replace it.



WARRANTY TERMS

The manufacturer shall repair or replace, through the dealer, any parts of the product found to be faulty due to manufacturing defects, for a period of 24 months as of the date of purchase. The warranty does not cover defects due to tampering, improper use or wear. The warranty is valid only if the customer returns to the product to the dealer complete in all its parts together with the receipt or other document proving the date of purchase

SPARE PARTS



V-TUF[®]

www.V-TUF.COM